A topographic map of a region in Iowa, featuring contour lines, a grid, and various geographical labels. The map is in grayscale and serves as the background for the text.

IGIC Lunch and Learn - September 20, 2023

Accessing Iowa Map Services in GIS and Web Apps

Gregg Hadish

Iowa Geospatial Portals/Apps/Data/Lists

- Data/App Portals
 - [Iowa Geographic Map Server \(iastate.edu\)](http://iastate.edu)
 - [Iowa DNR Mapping & GIS \(iowadnr.gov\)](http://iowadnr.gov)
 - [Iowa Open Geospatial Data \(iowa.gov\)](http://iowa.gov)
 - [Iowa Department of Transportation - Open Data \(arcgis.com\)](http://arcgis.com)
 - [Web Soil Survey \(usda.gov\)](http://usda.gov) [USDA Ag Data Commons](http://USDA.gov)
- ArcGIS REST Service and [OGC](http://OGC.org) (WMS, WFS, etc.) URLs
 - Add to [ArcGIS](http://ArcGIS.com), [QGIS](http://QGIS.org)
- Curated GIS Server lists
 - [GIS Servers \(cartobin.com\)](http://cartobin.com)
 - [Federal, State, County, City ArcGIS Servers \(mappingsupport.com\)](http://mappingsupport.com)

lowa Department of Transportati x +

https://public-iowadot.opendata.arcgis.com

Sign In

IOWADOT OPEN DATA

IOWA DOT OPEN DATA

MANAGING IOWA'S TRANSPORTATION INFRASTRUCTURE

Search for data

Welcome to the Iowa Department of Transportation's public platform for exploring and downloading open data. The Iowa DOT is committed to providing the traveling public, lawmakers and partners with easy to understand information that demonstrates how we are managing the state's transportation infrastructure. We are working hard to maximize the performance of our existing structures, minimize costs and improve the public's experience when traveling in Iowa. We are continuously developing new tools to help our stakeholders clearly see how we are performing.

Date/Time Format

All of our date/times are set as UTC in the REST service (unless otherwise noted). ArcGIS Online client applications including the open data site treats ALL date/time fields as UTC and converts them from UTC to your local timezone. If you access the data through the REST service directly or download it through the open data site, the time will remain as the actual UTC datetime (unless otherwise noted) and won't be converted to your local timezone.

More information can be found [here](#).

Featured Apps Public Apps DOT Apps Interactive Maps Training AGOL User Guide

lowa Department of Transportati x +

https://public-iowadot.opendata.arcgis.com

Sign In

IOWADOT OPEN DATA

More information can be found [here](#).

Featured Apps Public Apps DOT Apps Interactive Maps Training AGOL User Guide

EXPLORE CATEGORIES

OPERATIONS
Real-time data from our snowplow fleet, ITS devices (cameras and message signs), 511 events, weather, and more. Items in this category are updated at least once per day.

CRASH
Explore city and county crashes, intersection listings, and vehicle/person crashes.

BOUNDARY AND REFERENCE
Right of way, routes, district boundaries, and more.

IMPROVEMENT
Assets that have been identified for improvement through state/federal grant programs or the 5 year program.

CLASSIFICATIONS
Assets that are broken down and displayed by specific classifications such as right of way, rest areas, and Roadway Asset Management System (RAMS).

INVENTORY
Assets that are not broken down by specific classifications such as maintenance garages.

AVIATION
View runways,

TRANSIT
Includes regional

RAIL
View

PRINTABLE MAPS

DOWNLOADS
Link to directory

Bridge Point

Part of Iowa Bridges (Unofficial)

Authoritative

Iowa DOT | GIS Team
Iowa Department of Transportation

Summary

All Iowa bridges and structures along with historic tabular data. Service updates nightly and should NOT be used for decision making, as certain data values may not reflect current conditions.

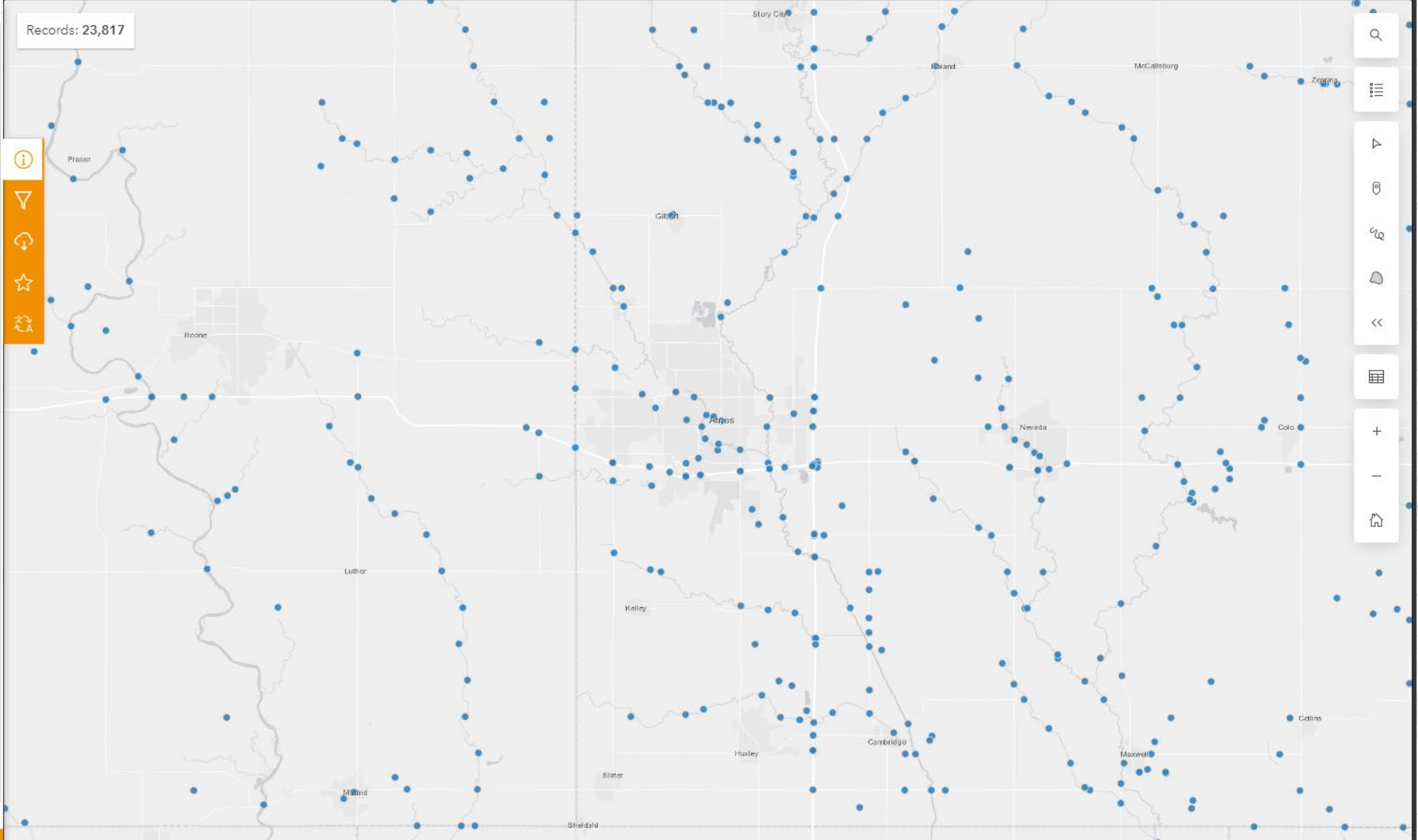
[View Full Details](#)

[Download](#)

Details

- Dataset**
Feature Layer
- February 10, 2020**
Info Updated
- February 10, 2020**
Data Updated
- February 10, 2020**
Published Date
- Records: 23,817**
[View data table](#)
- Public**
Anyone can see this content
- CC BY 4.0 License**

I want to use this >



ArcGIS REST Services Directory [Login](#)

[Home](#) > [services](#) [Help](#) | [API Reference](#)

[JSON](#) | [SOAP](#)

Folder: /

Current Version: 10.81

View Footprints In: [Portal Map Viewer](#)

Folders:

- [Aviation](#)
- [Boundaries](#)
- [Bridges_Structures](#)
- [Cadastral](#)
- [Communications](#)
- [Construction](#)
- [Emergency](#)
- [Environmental](#)
- [Exevision](#)
- [Facilities](#)
- [Hosted](#)
- [Imagery](#)
- [Investigations](#)
- [LiDAR](#)
- [LocationEnvironment](#)
- [Maintenance](#)
- [Pavement_Management](#)
- [PPMS](#)
- [Program_Management](#)
- [Project_Management](#)
- [Project_Scheduling](#)
- [Rail](#)
- [RAMS](#)
- [Right_of_Way](#)
- [RIMS](#)
- [Roadside_Development](#)
- [RWIS](#)
- [Survey](#)
- [Systems_Planning](#)
- [Test](#)
- [Topography](#)
- [Traffic](#)
- [Traffic_Operations](#)
- [Traffic_Safety](#)
- [Transit](#)
- [Utilities](#)

ArcGIS REST Services Directory [Login](#)

[Home](#) > [services](#) > [Bridges_Structures](#) > [Bridges_Structures \(MapServer\)](#) [Help](#) | [API Reference](#)

[JSON](#) | [SOAP](#)

Bridges_Structures/Bridges_Structures (MapServer)

View In: [ArcGIS JavaScript](#) [Portal Map Viewer](#) [ArcGIS Earth](#) [ArcMap](#) [ArcGIS Pro](#)

View Footprint In: [Portal Map Viewer](#)

Service Description:
Bridge and structure locations in Iowa. See [NBI Guide](#) for more info about this data set and how to use the National Bridge Inventory (NBI) fields.

The data provided is based on the last inspection performed within the past 24 months and may not be included in the official data published by the Federal Highway Administration (FHWA). Data should not be used for decision making, as certain data values may not reflect current conditions.

For official dataset, visit [FHWA](#)

For data questions, please contact [Iowa DOT](#)

Map Name: Bridges_Structures

[Legend](#)

[All Layers and Tables](#)

[Dynamic Legend](#)

[Dynamic All Layers](#)

Layers:

- [Bridge Point](#) (0)
- [Bridge Line](#) (1)

Tables:

- [Bridge Historic Data](#) (2)

Description:

Service Item Id: 1fd014ecf38740f49e15bd279382d332

Copyright Text: Iowa Department of Transportation - Bureau of Bridges and Structure

Spatial Reference: 102100 (3857)

lowa Map Services Command Search (Alt+Q) Not signed in

Project Map Insert Analysis View Edit Imagery Share Help Layer Map Image Layer Group Layer

Clipboard Navigate Layer Selection Inquiry Labeling Offline

Catalog Project Portal Computer Favorites Search Project

lowa DOT Map Services.ags

- Aviation
- Boundaries
- Bridges_Structures
 - Bridges_Structures
 - Bridges_Structures
- Cadastre
- Communications
- Construction
- Emergency
- Environmental
- Exeision
- Facilities
- Hosted
- Imagery
- Investigations
- LiDAR
- LocationEnvironment
- Maintenance
- Pavement_Management
- PPMS
- Program_Management
- Project_Management
- Project_Scheduling
- Rail
- RAMS
 - All_Routes
 - All_Routes
 - CurveAndGradeExample
 - Driveways
 - FullPathwayMedians
 - Horizontal_Curvature

Contents Search

lowa 2021

- Hybrid Reference Layer
- Bridges_Structures
 - Bridge Point
 - Bridge Line
- All_Routes
 - All Routes
 - Official Route Descriptor
 - COUNTY
 - INSTITUTION
 - MUNICIPAL
 - PARK
 - STATE
 - <all other values>
 - ortho\naip_2021_nc
 - World Imagery

lowa 2021

Pop-up

All Routes (1)

COUNTY OF STORY, RIVERSIDE ROAD, E

All Routes - COUNTY OF STORY, RIVERSIDE R...

OBJECTID	318474593
Route ID	CO08546530E
From Measure	0
To Measure	2.187824
Effective Start Date	1/1/2016 12:00:01 AM
Effective End Date	<Null>
Route Name	COUNTY OF STORY, RIVERSIDE ROAD, E
Official Route Descriptor	COUNTY
Official Route Geographic ID	0085
Official Route System Code	4
Official Route Number	6530
Official Route Direction	E
Ramp Classification	N
Official Route Prefix	<Null>
Official Common Name	<Null>
Record Priority	1
Table Priority	3
Winter Route Name	RIVERSIDE ROAD E

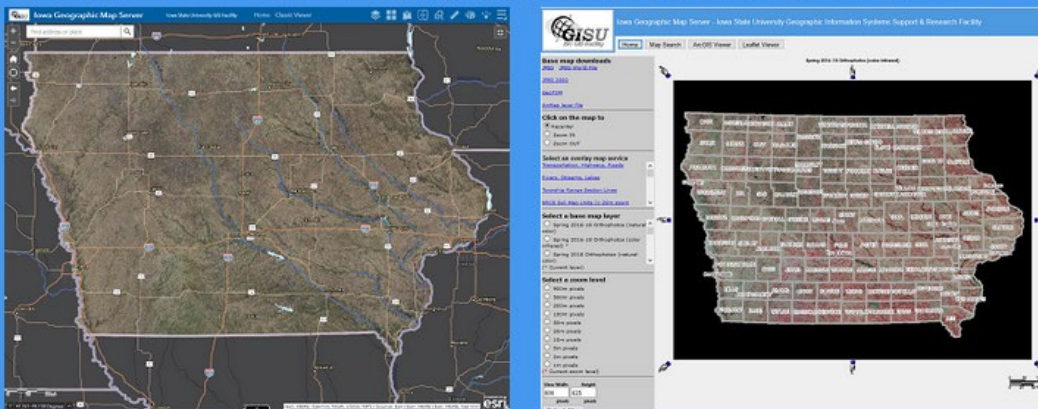
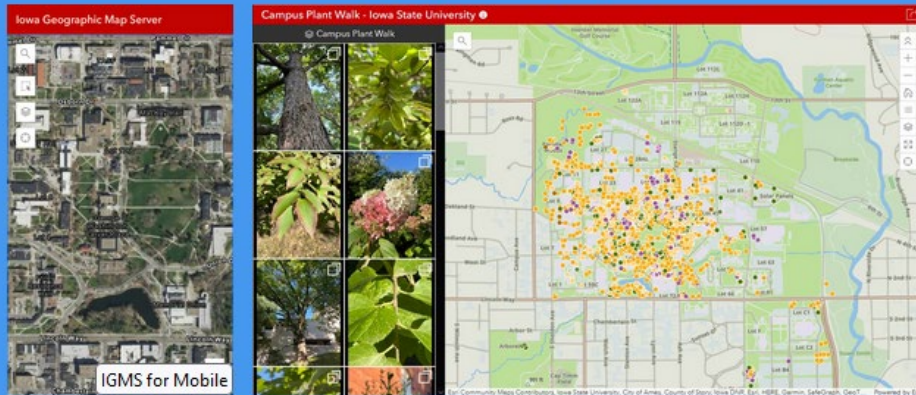
1:70,707 459,951.54E 4,652,252.84N m Selected Features: 0



Iowa State University Geographic Information Systems Support & Research Facility

Home Map Layers Map Viewers Map Search REST Services WMS Directory

Iowa Geographic Map Server



This site provides free access to Iowa geographic map data through online map viewers and web map services. The site was developed by the Iowa State University Geographic Information Systems Support and Research Facility in cooperation with the Iowa Department of Natural Resources, the USDA Natural Resources Conservation Service, and the Massachusetts Institute of Technology. This site was first launched in March 1999. Please provide attribution to the Iowa State University Geographic Information Systems Support and Research Facility and data providers when using map images from this site in publications or presentations.

ArcGIS REST Services Directory

[Login](#) | [Get Token](#)

[Home](#) > [services](#) > [ortho](#)

[Help](#) | [API Reference](#)

[JSON](#) | [SOAP](#)

Folder: ortho

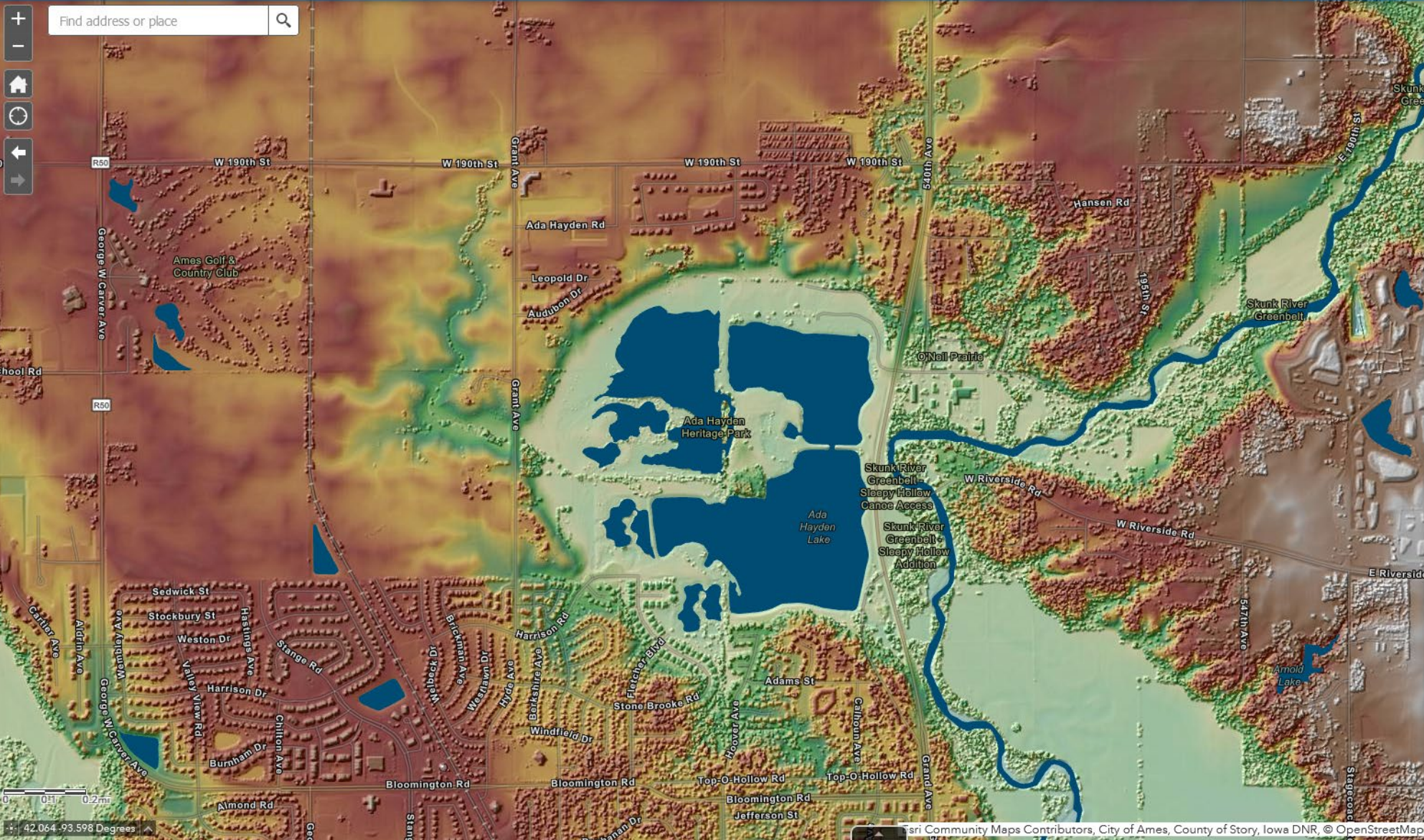
Current Version: 10.91

View Footprints In: [ArcGIS Online Map Viewer](#)

Services:

- [ortho/admin_boundaries](#) (MapServer)
- [ortho/admin](#) (MapServer)
- [ortho/andreas](#) (ImageServer)
- [ortho/color_hillshade_30m](#) (ImageServer)
- [ortho/drg100](#) (ImageServer)
- [ortho/drg24](#) (ImageServer)
- [ortho/drg250](#) (ImageServer)
- [ortho/gaplandcover](#) (ImageServer)
- [ortho/glo_survey](#) (ImageServer)
- [ortho/glo_survey](#) (MapServer)
- [ortho/GLO_Vegetation](#) (ImageServer)
- [ortho/GLO_vegetation](#) (MapServer)
- [ortho/idot_historical_maps](#) (ImageServer)
- [ortho/Iowa_Civil_Townships](#) (MapServer)
- [ortho/Iowa_Drainage_Districts](#) (MapServer)
- [ortho/Iowa_Historical_Photo_Dates](#) (MapServer)
- [ortho/Iowa_Historical_Road_Maps](#) (MapServer)
- [ortho/Iowa_Landforms](#) (MapServer)
- [ortho/Iowa_NAIP_Photo_Dates](#) (MapServer)
- [ortho/Iowa_Photo_Dates](#) (MapServer)
- [ortho/Iowa_PLSS](#) (MapServer)
- [ortho/Iowa_Public_Lands](#) (MapServer)
- [ortho/Iowa_Railroads](#) (MapServer)
- [ortho/Iowa_Soils](#) (MapServer)
- [ortho/Iowa_Spring_Photo_Dates](#) (MapServer)
- [ortho/lc_2002](#) (ImageServer)
- [ortho/lidar_2010_color_hillshade](#) (ImageServer)
- [ortho/lidar_2010_dem](#) (ImageServer)
- [ortho/lidar_2010_hillshade](#) (ImageServer)
- [ortho/lidar_2020_color_hillshade](#) (ImageServer)
- [ortho/lidar_2020_dem](#) (ImageServer)
- [ortho/lidar_2020_dsm_color_hillshade](#) (ImageServer)
- [ortho/lidar_2020_dsm_hillshade](#) (ImageServer)
- [ortho/lidar_2020_dsm](#) (ImageServer)
- [ortho/lidar_2020_hillshade](#) (ImageServer)
- [ortho/lidar_2020_intensity](#) (ImageServer)

Find address or place



Choose Map Layers

Reference Map Layers

Iowa LiDAR and Elevation

- Iowa - 2020 LiDAR Contours
- Iowa - 2020 LiDAR Water Breaklines
- Iowa - DRAFT 2020 LiDAR Digital Surface Model
- Iowa - 2020 LiDAR Color Hillshade
- Iowa - 2020 LiDAR Hillshade
- Iowa - 2020 LiDAR Slope
- Iowa - 2020 LiDAR DEM
- Iowa - 2020 LiDAR Intensity
- Iowa - 2010 LiDAR Contours
- Iowa - 2010 LiDAR Color Hillshade
- Iowa - 2010 LiDAR Hillshade
- Iowa - 2010 LiDAR DEM
- Iowa - Color Hillshade (10-meter)
- Iowa - Color Hillshade (30-meter)
- Iowa - Shaded Relief (30-meter)

Iowa Orthophotos

Iowa Historical Aerial Photos

Iowa Geology, Soils, and Land Cover

lowa Map Services Command Search (Alt+Q) Not signed in

Project Map Insert Analysis View Edit Imagery Share Help Image Service Layer Data

Clipboard Navigate Layer Selection Inquiry Labeling Offline

Catalog Project Portal Computer Favorites Search Project

Servers

- lowa Geographic Map Server.ags
 - ACPF
 - BMPs
 - iSites
 - ortho
 - admin
 - admin_boundaries
 - andreas
 - color_hillshade_30m
 - drg24
 - drg100
 - drg250
 - gaplandcover
 - glo_survey
 - GLO_Vegetation
 - GLO_vegetation
 - idot_historical_maps
 - lowa_Civil_Townships
 - lowa_Drainage_Districts
 - lowa_Historical_Photo_Dates
 - lowa_Historical_Road_Maps
 - lowa_Landforms
 - lowa_NAIP_Photo_Dates
 - lowa_Photo_Dates
 - lowa_PLSS
 - lowa_Public_Lands
 - lowa_Railroads
 - lowa_Soils

Contents Search

Drawing Order

- lowa 1930
 - Hybrid Reference Layer
 - ortho\ortho_1930
 - World Imagery

lowa 1930

lowa 2021

1:18,535 446,390.83E 4,659,392.79N m 1:18,535 448,435.86E 4,657,754.81N m



- Browser
- WCS
 - WFS / OGC API - Features
 - ArcGIS REST Servers
 - Iowa Geographic Map Server
 - admin
 - admin_boundaries
 - andreas
 - color_hillshade_30m
 - drg100
 - drg24
 - drg250
 - gaplandcover
 - glo_survey
 - glo_survey
 - GLO_Vegetation
 - GLO_vegetation
 - idot_historical_maps
 - Iowa_Civil_Townships
 - Iowa_Drainage_Districts
 - Iowa_Historical_Photo_Dates
 - Iowa_Historical_Road_Maps
 - Iowa_Landforms
 - Iowa_NAIP_Photo_Dates
 - Iowa_Photo_Dates
 - Iowa_PLSS
 - Iowa_Public_Lands
 - Iowa_Railroads

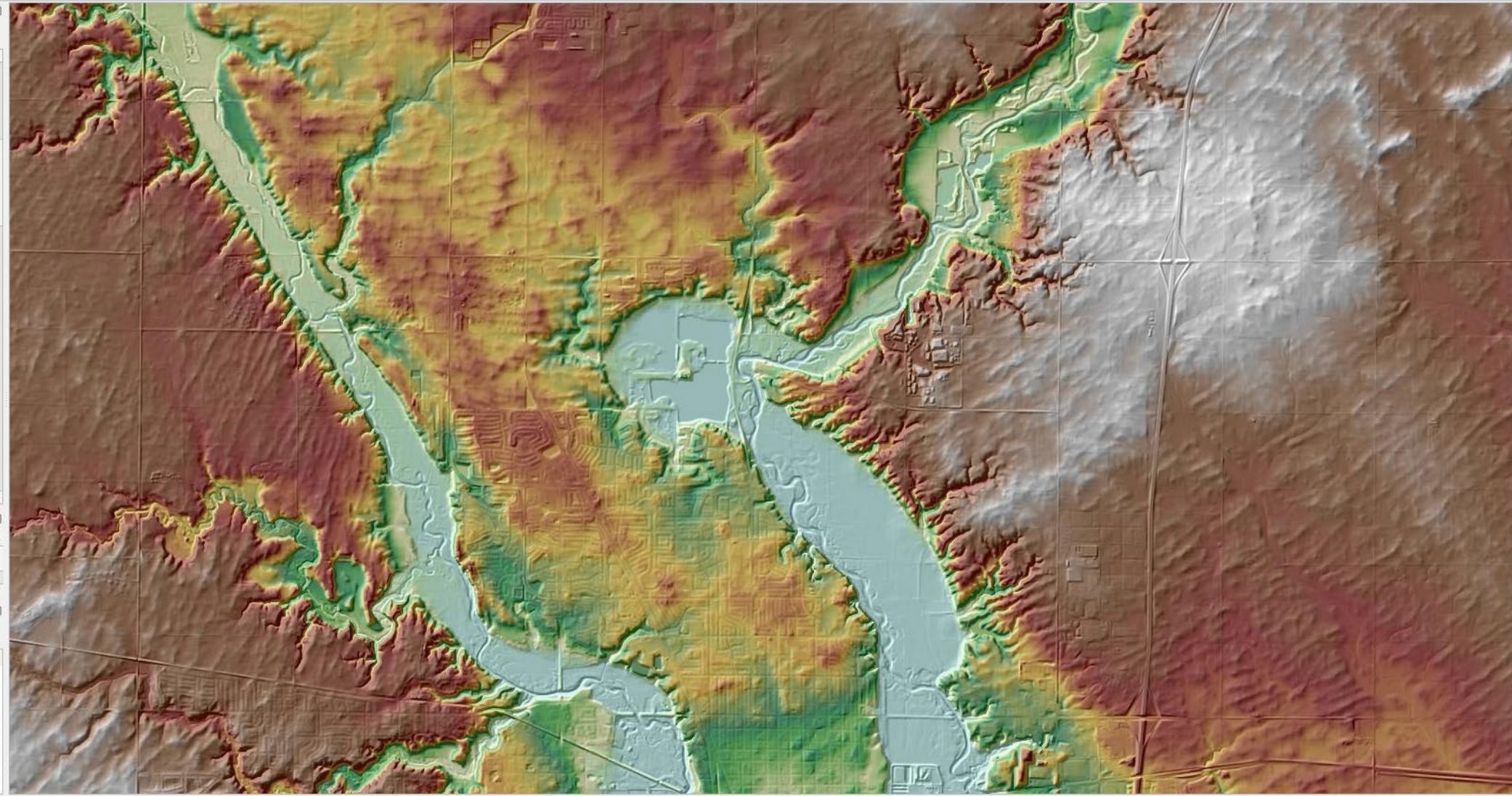
GPS Information

Connect

Latitude


Longitude

- Layers
- ortho/GLO_Vegetation
 - ortho/lidar_2020_color_hillshade
 - Red: Band_1
 - Green: Band_2
 - Blue: Band_3



Type to locate (Ctrl+K)

geodata <https://geodata.iowa.gov> Sign In



Iowa Geospatial Data

Home Data Collections and Projects ▾ Guidelines and Standards


State of Iowa Open Geospatial Data

Public geospatial data, tools, and resources from the State of Iowa

Subscribe to Iowa Geospatial News and Updates

Want information about new geospatial data and statewide data initiatives? Subscribe using the button below.

geodata <https://geodata.iowa.gov/explore?tags=inlandwaters> Sign In






Iowa Geospatial Data


Home Data Collections and Projects ▾ Guidelines and Standards

[Switch to classic view](#)

All (213) Data (115) Downloadable or External Data (81) Apps & Maps (17)



Filters Reset 1 - 12 of 18 Relevance ▾   

Tag: Inlandwaters ×


Type 
Filter options

- Feature Service (110)
- Document Link (62)
- Hub Page (19)
- Web Mapping App...
- Map Service (6)

Show 6 more ▾

Source  
Filter options

- State of Iowa (70)




Digital Flood Insurance Rate Maps

NRGIS_iowadnr

The objective of the Floodplain Mapping/Redelineation data submission is to archive the flood boundary and redelineation dat...

Type: Map Service Date updated: 2/26/2021
Tags: Base Flood Elevation, FEMA-... Date created: 11/10/2020



Flood Depth Downloads by HUC 8

State of Iowa | geodata_iowa

DO NOT DELETE OR MODIFY THIS ITEM. This item is managed by the ArcGIS Hub application. To make changes to this page, please...

Type: Hub Page Date updated: 12/3/2020

Folder: /

https://programs.iowadnr.gov/geos...

ArcGIS REST Services Directory

[Home](#) > [services](#) [Login](#) | [Get Token](#)
[Help](#) | [API Reference](#)

[JSON](#) | [SOAP](#)

Folder: /

Current Version: 10.51

View Footprints In: [ArcGIS Online map viewer](#)

Folders:

- [Agriculture](#)
- [Boundaries](#)
- [Elevation](#)
- [fisheries](#)
- [forestry](#)
- [GeoHub](#)
- [Geology](#)
- [LandCover](#)
- [OneStop](#)
- [Projects](#)
- [Recreation](#)
- [reference](#)
- [SurfaceWaters](#)
- [tools](#)
- [Utilities](#)
- [waterquality](#)
- [Watersheds](#)

Services:

- [Geometry](#) (GeometryServer)

Supported Interfaces: [REST](#) [SOAP](#) [Sitemap](#) [Geo Sitemap](#)

forestry/Tree_Inventory_Map (MapServer)

https://programs.iowadnr.gov/geospatial/rest/services/f...

ArcGIS REST Services Directory

[Home](#) > [services](#) > [forestry](#) > [Tree_Inventory_Map \(MapServer\)](#) [Login](#) | [Get Token](#)
[Help](#) | [API Reference](#)

[JSON](#) | [SOAP](#)

forestry/Tree_Inventory_Map (MapServer)

View In: [ArcGIS JavaScript](#) [ArcGIS Online map viewer](#) [Google Earth](#) [ArcMap](#) [ArcGIS Explorer](#)

View Footprint In: [ArcGIS Online map viewer](#)

Service Description:

Map Name: Layers

[Legend](#)

[All Layers and Tables](#)

[Dynamic Legend](#)

[Dynamic All Layers](#)

Layers:

- [Tree Inventory](#) (0)

Description:

Copyright Text: Iowa DNR

Spatial Reference: 26915 (26915)

Single Fused Map Cache: false

Initial Extent:

XMin: 7719.599306231539
YMin: 4658977.991441593
XMax: 943412.9351086544
YMax: 4961771.1643284485
Spatial Reference: 26915 (26915)

Full Extent:

XMin: 208773.87920000032
YMin: 4487072.2038
XMax: 734196.19029999999
YMax: 4946082.0108
Spatial Reference: 26915 (26915)

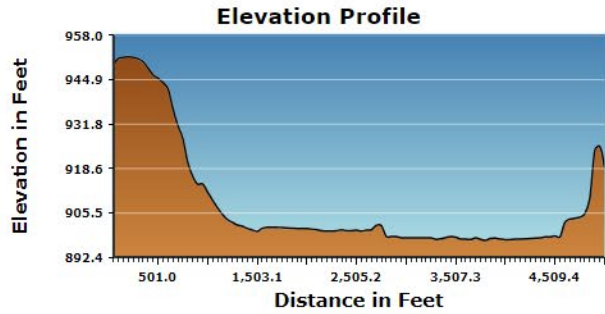
Units: esriMeters

Iowa Elevation Tools

[How to use the tool](#)
[Data 3m Posts derived from LiDAR](#) [More about the data](#)

[Clear](#) | [Point](#) | [Multipoint](#) | [Polyline](#) | [Profile](#)

[Profile](#) | [Data Table](#)



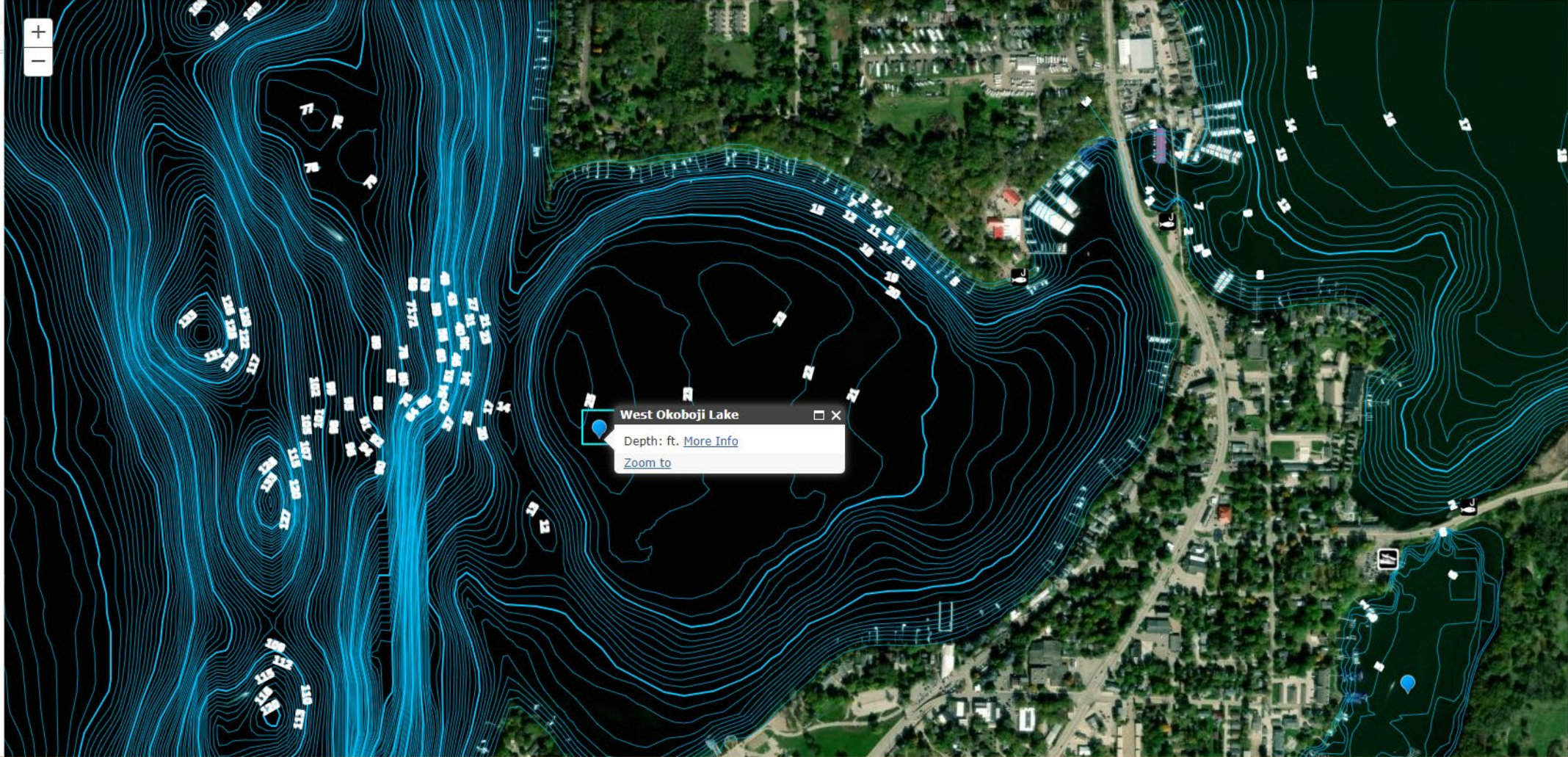
Find address or place

T95NR45W02

[Search by Township](#)

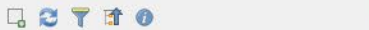
Search

Search By Lake Name





Browser

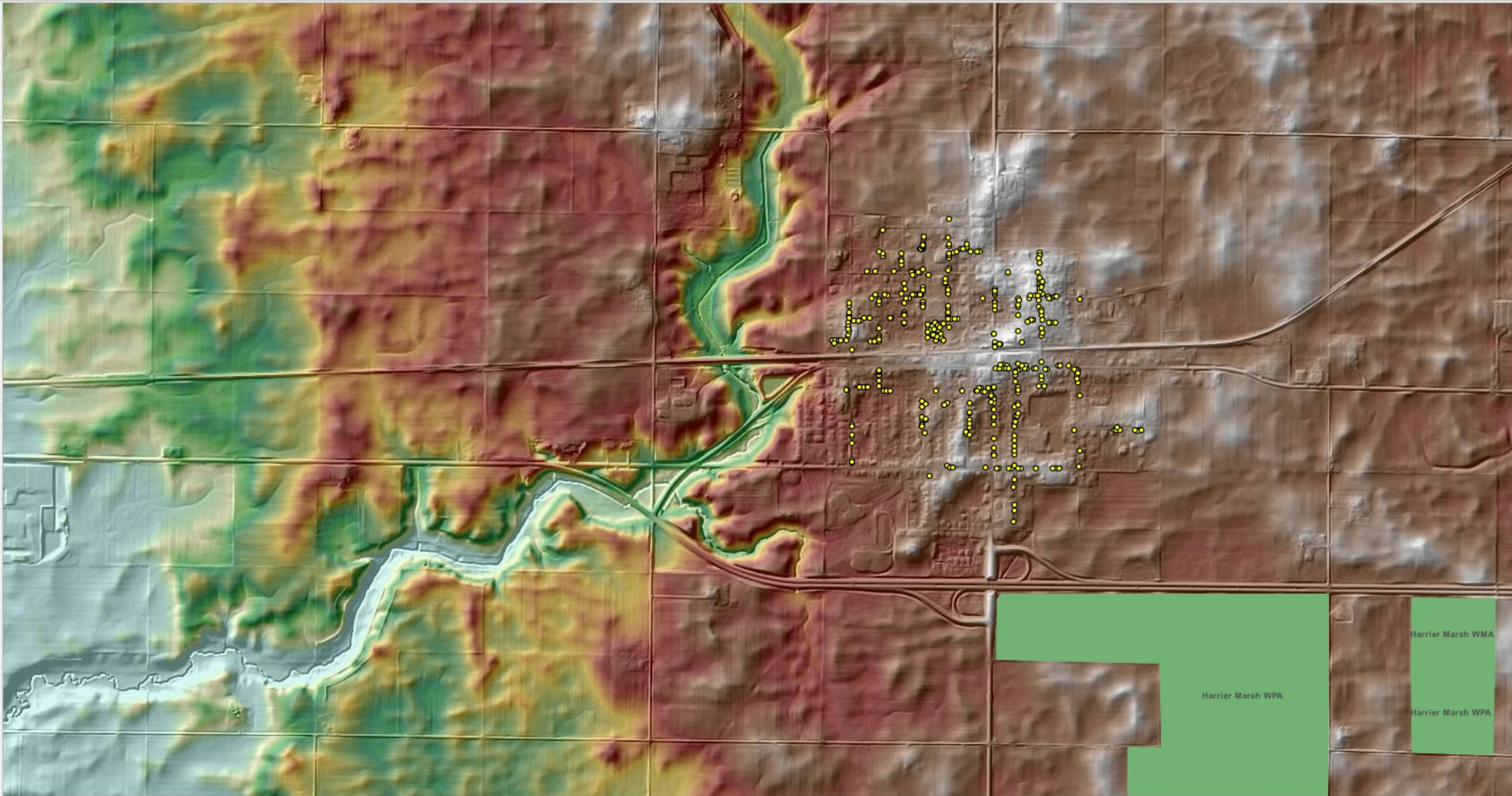


- WFS / OGC API - Features
- ArcGIS REST Servers
 - Iowa DNR
 - Agriculture
 - Boundaries
 - Public_Lands
 - Public Areas
 - Public Areas
 - Public_Lands_ESRI
 - Elevation
 - fisheries
 - forestry
 - Tree_Inventory
 - Tree Inventory
 - Tree Inventory
 - Tree_Inventory_Map
 - GeoHub
 - Geology
 - LandCover
 - OneStop
 - Projects
 - Recreation
 - reference
 - SurfaceWaters
 - tools
 - Utilities
 - waterquality
 - Watersheds
- Iowa Geographic Map Server
 - admin
 - admin_boundaries

Layers



- (All layers)
- Tree Inventory
- Public Areas
- ortho/GLO_Vegetation
- ortho/lidar_2020_intensity
- ortho/lidar_2020_color_hillshade



Type to locate (Ctrl+K)

Search

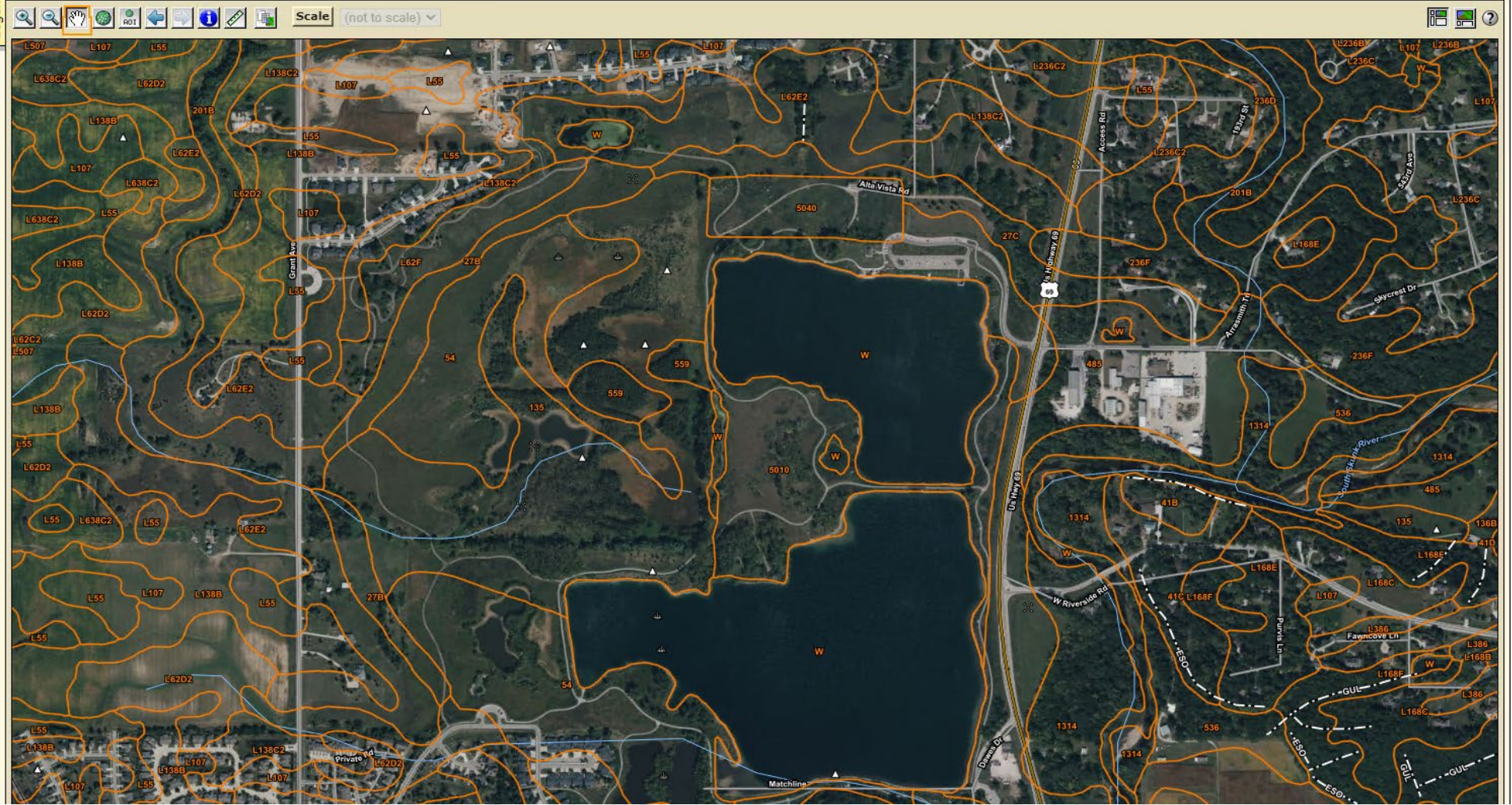
Map Unit Legend

Story County, Iowa (IA169)

Story County, Iowa (IA169)

Map Unit Symbol	Map Unit Name	Acres in AOI	Percent of AOI
6	Okoboji silty clay loam, 0 to 1 percent slopes	5,189.8	1.4%
27B	Terril loam, 2 to 6 percent slopes	2,417.4	0.7%
27C	Terril loam, 5 to 9 percent slopes	422.0	0.1%
34C	Estherville sandy loam, 2 to 6 percent slopes	434.0	0.1%
41B	Sparta loamy fine sand, 2 to 5 percent slopes	577.8	0.2%
41C	Sparta loamy fine sand, 5 to 9 percent slopes	523.1	0.1%

Soil Map



USDA Ag Data Commons | Providing Central Access to USDA's Open Research Data

data.nal.usda.gov

USDA Ag Data Commons U.S. DEPARTMENT OF AGRICULTURE

Providing Central Access to USDA's Open Research Data

Log In

Datasets Software & Tools About Us News Contact Us

search

Turfgrass Soil Carbon Change


Featured dataset: Meta-analysis of soil carbon sequestration rates from 63 studies. Raw data and code are presented.


Manuresheds: sustainable ag

Classifies US counties by their capacity to supply manure P and N from livestock production or assimilate & remove excess P and


US Ag/Forestry GHG

Featured dataset: U.S. cropped, grazed, and forestland GHG emissions estimates, data, maps, and potential for mitigation, 1990-2018







AGRICULTURAL ECONOMICS




BIOENERGY




ANIMALS & LIVESTOCK




FOOD & NUTRITION




GENOMICS & GENETICS



AGROECOSYSTEMS & ENVIRONMENT



PLANTS & CROPS



AGRICULTURAL PRODUCTS

Programs

- AgBioData
- ARDN
- ARS Culture Collection
- Farm 2 Fly
- i5k Workspace
- Life Cycle Assessment
- Long Term Agroecosystem Research

News

August 22, 2023
Stay Updated

Stay up to date about the changes and enhancements coming to the Ag Data Commons by signing up for our email list.

To sign up:

- Go to the [ARS email list subscription page](#)
- Enter your email address and select Next

https://data.nal.usda.gov/about-ag-data-commons January 18, 2023

USDA Ag Data Commons | Providing Central Access to USDA's Open Research Data

data.nal.usda.gov/dataset/soil-data-access-web-service/resource/b806fe02-041c-490...

USDA Ag Data Commons U.S. DEPARTMENT OF AGRICULTURE

Providing Central Access to USDA's Open Research Data

Log In

Datasets Software & Tools About Us News Contact Us

search

Home / Datasets / Soil Data Access Web Service / Soil Data Access Web Service

Back to dataset

Soil Data Access Web Service

The following Soil Data Access web services are available:

- <https://SDMDataAccess.sc.egov.usda.gov/Tabular/SDMTabularService.asmx>
- <https://SDMDataAccess.sc.egov.usda.gov/Tabular/post.rest>
- <https://SDMDataAccess.sc.egov.usda.gov/Spatial/SDMWGS84Geographic.wfs>
- <https://SDMDataAccess.sc.egov.usda.gov/Spatial/SDMNAD83Geographic.wfs>
- <https://SDMDataAccess.sc.egov.usda.gov/Spatial/SDMWM.wfs>
- <https://SDMDataAccess.sc.egov.usda.gov/Spatial/SDM.wms>

Web Page

Resources

Soil Data Access Web Service

AskUSDA

NAL Home

Policies and Links

Plain Writing

FOIA

Accessibility Statement

Privacy Policy

Non-Discrimination Statement

Civil Rights Policy

Information Quality

Agricultural Research Service

USDA.gov

USA.gov

WhiteHouse.gov

GIS Servers

Home / State Servers / Iowa

Iowa

Rows in **RED** do not have an open Table of Contents. You can append ?f=json to the url to see the information available on that server.

Admin Level	URL	Server Info
State	https://eoc.iowa.gov/arcgis/rest/services	Info
State	https://programs.iowadnr.gov/geospatial/rest/services	Info
State	https://gis.iowadot.gov/agshost/rest/services	Info
State	https://services.arcgis.com/8lRhdtTsQyJpO52F1/arcgis/rest/services	Info
State	https://gis.legis.iowa.gov/arcgis/rest/services	Info
State	https://ortho.gis.iastate.edu/arcgis/rest/services	Info
State	https://geoservices.iowa.gov/arcgis/rest/services	Info
County	https://wfs.schneidercorp.com/arcgis/rest/services/AdairCountyIA_WFS/MapServer	Info
County	https://wfs.schneidercorp.com/arcgis/rest/services/BuenaVistaCountyIA_WFS/MapServer	Info
County	https://services.arcgis.com/4YineAQdtmx0tv46/ArcGIS/rest/services/ButlerIAFeatures/FeatureServer	Info
County	https://wfs.schneidercorp.com/arcgis/rest/services/CassCountyIA_WFS/MapServer	Info
County	http://gismaps.cgcounty.org/arcgis/rest/services	Info
County	https://wfs.schneidercorp.com/arcgis/rest/services/CerroGordoCountyIA_WFS/MapServer	Info
County	https://wfs.schneidercorp.com/arcgis/rest/services/ChickasawCountyIA_WFS/MapServer	Info

List of 3,000+ Federal, State, County, and Local GIS Servers

Iowa State GIS Servers

Iowa Open Data Portal
Website: <https://data.iowa.gov/>

Iowa Department of Homeland Security and Emergency Management
Website: <https://homelandsecurity.iowa.gov>
GIS: <https://eoc.iowa.gov/arcgis/rest/services>
Parcel lines: Public/parcels_da/MapServer/0
Parcel lines: Public/AdminBoundaries/MapServer 2017 data
8-2-2023 No tiled data

Iowa Department of Natural Resources
Website: <https://www.iowadnr.gov>
GIS: <https://programs.iowadnr.gov/geospatial/rest/services>

100

8-2-2023 Has tiled data. Do a Google search. **site:server_address "wmts"**

Iowa Department of Transportation
Website: <https://www.iowadot.gov/#/services>
GIS: <https://gis.iowadot.gov/agshost/rest/services>
8-2-2023 No tiled data
GIS: <https://services.arcgis.com/8lRhdtTsQyJpO52F1/arcgis/rest/services>

Iowa legislature
Website: <https://www.legis.iowa.gov>
GIS: <https://gis.legis.iowa.gov/arcgis/rest/services>
8-2-2023 No tiled data

Iowa State University GIS Support and Research Facility
Website: <https://www.gis.iastate.edu/gisf>
GIS: <https://ortho.gis.iastate.edu/arcgis/rest/services>
8-2-2023 No tiled data

Iowa various layers
GIS: <https://geoservices.iowa.gov/arcgis/rest/services>
8-2-2023 No tiled data